

The ASDA saga

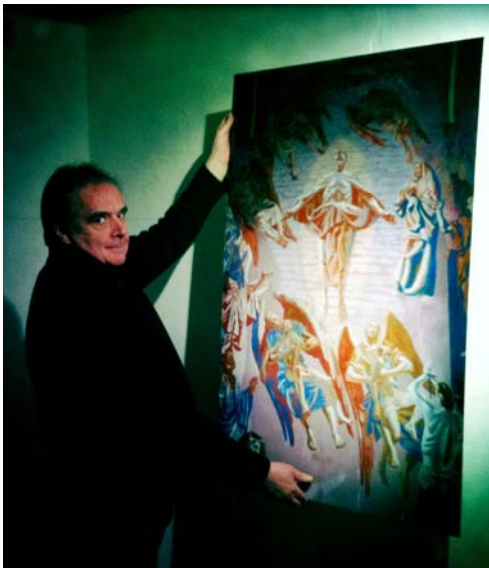
The continuing saga of Asda's attempts to build a new supermarket in Cheylesmore took another few twists last month when the original planning permission was quashed by a judicial review - swiftly followed by Asda's announcement that it will re-submit the planning application.

Coventry city council's planning committee initially approved the application in January last year, in the face of strong opposition from local residents and traders, but a judicial review has now ruled that the council made an error in the wording of a letter sent out to residents to inform them of the decision.

Asda, which owns the now derelict site of the old Cheylesmore pub, responded with an immediate confirmation that it will re-apply for permission to build the store.

Camera Principis

Scores of brand new images highlighting the City's wonderful heritage have been used to mount an exhibition at the Roots Gallery, Earl Street, that opened earlier this month. Organised by three members of the Society, Vice-Chairman Paul Maddocks, committee member Adam Mottershead and Lucy Daniel, the display explores Coventry's public art and architecture, its historical ruins and listed buildings, characters among our independent retailers and the importance of Coventry's parks and public spaces. Adam writes: "Coventry has long been considered a city with a heavy built environment following its extensive post-war reconstruction. This exhibition aims to show that the city



Work in progress: Paul mounting one of the exhibits for *Camera Principis*

is still rich in natural beauty, striking architecture and historic significance. Hopefully it will encourage the people of Coventry to become more involved in their City's future."

Camera Principis has been created using readily available camera equipment including smartphones to capture a different view of Coventry and is expected to raise the creative aspirations of the city. Without doubt it will stimulate a healthy debate and help to promote the City as a vibrant cultural and creative place to live. *Camera Principis* opened to the public on Monday January 7, with a formal opening on Thursday January 10 from 6pm-8pm. In addition, Roots Gallery will host a series of supporting events based on the themes of the exhibition with further details available in due course at www.rootsgallery.co.uk.

Work day at Charterhouse



Last month we reported that the keys to Charterhouse had been handed to the Preservation Trust. Following this milestone event a clean-up day was organised after Christmas and local supporters turned out to carry on some initial maintenance work in the grounds to the medieval building. Further work will take place soon and more volunteers will be called for.



January 2013



The next meeting:
a presentation by Jim Brown from
**The National
Memorial
Arboretum**

(near to Lichfield)

**Monday, January 14
Shop Front Theatre,
City Arcade (7.30 pm)
Kerbside parking outside**

There are over 150 memorials and plots for the armed forces, civilian organisations and voluntary bodies who have played a part in serving the country. A number of corporate war memorials – from British banks, building societies, and insurance companies – have been relocated to the grounds.

Within the Arboretum is the Millennium Chapel of Peace and Forgiveness where, at 11 am each day, an act of remembrance takes place.



More news and views on our website: www.coventrysociety.org.uk

Permitted development rights

The Society made representations on recent Government proposals to relax permitted development rights (PDR). The existing rights were carefully designed to balance private interests against neighbourhood concerns. Yet the Government has provided little or no evidence that the existing provisions are deficient. It calculates that relaxing PDR rights will create £600 million of construction output and 18,000 jobs yet the claim hardly bears scrutiny. In our opinion it's not believable that relaxing the PDR will increase building activity in any significant way.

Most post-war development has been designed to take account of the current permitted development regulations, and houses have been designed with small gardens. Permitting development to the extent now proposed will surely create over-developed housing areas. The relaxation will encourage development to a poorer standard with low quality materials which will add to the impact on neighbours.

On-street parking is also a problem in most urban areas and applications should be considered on merit rather than a presumption in favour of development.

Foleshill Road depot



Canalside: One of the illustrations provided that's indicative of the proposals put forward

Plans to develop the former City Engineers Depot off Foleshill Road were presented to the Planning Committee just before Christmas and two members of our committee Paul Maddocks and John Payne went along to reinforce our views on the application. After the meeting John reported:

"Paul and I were not successful in persuading members to refuse or defer the planning application for housing on the site. However members did accept that the submitted design was not acceptable and it will require a planning brief, a better layout and a community engagement process at the details stage."

It appears that some pretty spurious reasons were provided by the applicants as to why a mixed development as outlined by Ian Harrabin, developer of Electric Wharf, was not possible.

They said that his development required a £1.8 million subsidy and that wasn't available for this scheme. Our representatives were not allowed to give the obvious response, that with the proposed development we are not converting a power station or building a bridge and therefore the economics are different.

Well worth making these very relevant points, and we await detailed proposals.

Website news

If you have a smart phone you can go to the website directly by using the QR code below:



Contacts

77 Craven Street, Coventry CV5 8DT
Tel: 024 7640 2030

Email: campaigns@coventrysociety.org.uk
If Twitter is your thing, you can follow us at <https://twitter.com/#!/CovSoc>

We also have our own page on Facebook.
You can also follow us there at <http://www.facebook.com/CoventrySociety>

It has been suggested that under 'Buildings at risk' we should now add the former Toy Museum at Whitefriars Gate and other sites like St. Mark's Church on Stoney Stanton Road.

A new list perhaps named the "Watched List" could be created and important heritage buildings be added, such as Copswood Grange & Lodge, the Whitley Pumping station, the old Bakery in Chapelfields, the Rose and Woodbine pub, the Blackhorse in Spon End, and both the Chapels and Lodge at London Road Cemetery, as well as Victorian buildings near to the Butts.

We need to keep our website up-to-date and using your local knowledge it will surely be possible to add even more buildings to our website.

Please use our email address to send in your suggestions.

Meetings

Some members have suggested we revert to having question time at our monthly meeting after a break for refreshments.

We appreciate feed back and this suggestion has been thoroughly discussed in committee.

It was decided however that as a general rule the presentation is better followed immediately by question time otherwise the thread of the subject is easily lost. It was also noted that there have also been occasions when our speakers have had to leave in time to catch a train by 9pm.

In future all general announcements will be given out after refreshments. Hopefully the majority of members will consider this the best normal arrangement of business for our monthly meetings.